

Measures AC current passing through the center

2.0 Inch Opening Current Transformer

Electrical Specifications

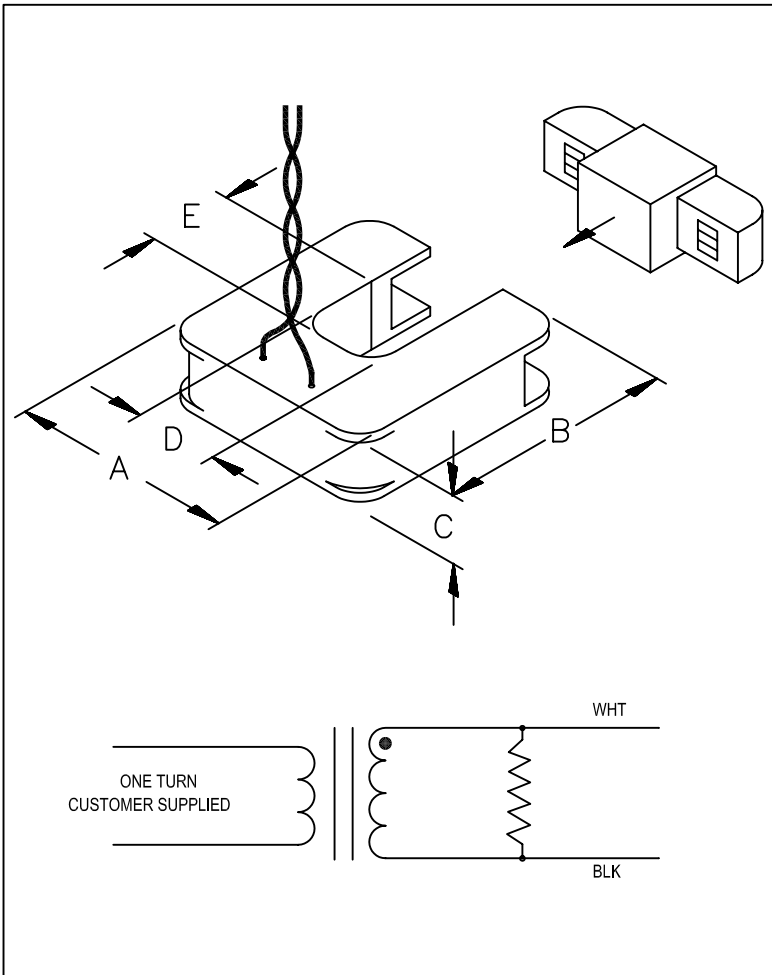
- Output 0.333 V at rated current
- Accuracy $\pm 1\%$
- Phase angle < 2 degrees
- Rated accuracy at 10% to 130% of rated current

Mechanical Specifications

- Epoxy encapsulated housing
- Leads-8ft. twisted pair, 22 AWG

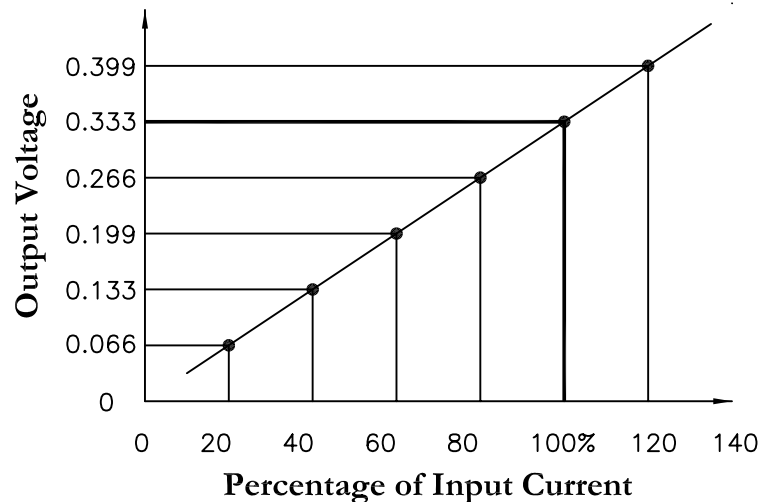
Features

- UL recognized
- Precision burden resistor
- Other ratings and specifications are available



MAGNELAB P/N	RATED CURRENT (Amps)	DIMENSIONS (INCHES)				
		A	B	C	D	E
SCT-2000-000	0-1500*	4.750	5.000	1.200	2.000	2.000
SCT-2000-100	100					
SCT-2000-200	200					
SCT-2000-300	300					
SCT-2000-400	400					
SCT-2000-600	600					
SCT-2000-800	800					
SCT-2000-1000	1000					
SCT-2000-1200	1200					
SCT-2000-1500	1500					

* Products with -000 have no burden resistor, and the output voltage is clamped to 22 Volts.



Phone: (303) 772-9100

Fax: (303) 772-9400

E-Mail: info@magnelab.com

Web Site: www.magnelab.com



MAGNELAB
INCORPORATION
LONGMONT, COLORADO 80501