

# CT SPECIFICATIONS

## SPLIT CORE CURRENT TRANSFORMERS

### 600/1000A

### 5.08 CM (2.0") WINDOW



The low-cost solution for permanent or long-term studies. The split core design means no de-energizing or wire disconnection required.

Opening "Split-Core" Current Transformer (SCT) provides linear output voltage that is directly proportional to the input current. This current transformer is easily and safely installed over existing electrical power lines without disconnecting the lines or interrupting service.

DENT's energy monitoring components are used for a variety of applications including building automation, tenant submetering, performance verification, energy management and new technology assessment.



DENT P/N	NOMINAL RATING (Amps)	USEFUL CURRENT RANGE (Amps)	DIMENSIONS				
			A	B	C	D	E
CT-SCL-0600	600	60 - 780	12.07 cm (4.8")	12.70 cm (5.0")	3.05 cm (1.2")	5.08 cm (2.0")	5.08 cm (2.0")
CT-SCL-1000	1000	100 - 1200					

### ELECTRICAL SPECIFICATIONS

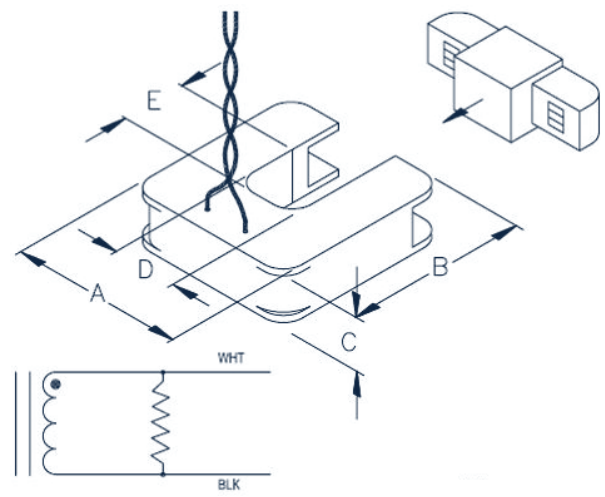
- Output Signal**  
333mV @ rated current
- Accuracy**  
+/- 1% at 10% to 130% of rated current
- Phase Shift**  
<2° at rated current
- Frequency Range**  
50 Hz to 400 Hz

### MECHANICAL SPECIFICATIONS

- Dimensions**  
12.07 x 12.70 x 3.05cm (4.8 x 5.0 x 1.2")
- Polarity**  
White lead is positive
- Output Lead**  
Leads 2.7m (8ft) twisted pair 22 AWG
- Operating Temperature**  
Maximum 105°C (220°F)

### OTHER FEATURES

- Window Size**  
5.08cm (2.0")
- Weight**  
748 g (26.4 oz)
- Dielectric Strength**  
5000V around the case  
600V rated leads
- Storage Temperature**  
Maximum 105°C (220°F)
- Case Protection**  
Epoxy encapsulated housing



### SAFETY SPECIFICATIONS

- ETL Listed**  
Compliant with IEEE C57.13-1993
- Working Voltage**  
Maximum 600Vrms

### ORDERING PART NUMBER

- AVAILABLE UNTERMINATED (U) OR WITH BANANA PLUGS (B)
- CT-SCL-0600-U or -B**
- CT-SCL-1000-U or -B**