

The low-cost solution for permanent or long-term studies. The split core design means no de-energizing or wire disconnection required.

Opening “Split-Core” Current Transformer (SCT) provides linear output voltage that is directly proportional to the input current. This current transformer is easily and safely installed over existing electrical power lines without disconnecting the lines or interrupting service.

DENT’s energy monitoring components are used for a variety of applications including building automation, tenant submetering, performance verification, energy management and new technology assessment.



### ELECTRICAL SPECIFICATIONS

**Output Signal**  
333mV @ rated current

**Accuracy**  
+/- 1% at 10% to 130% of rated current

**Phase Shift**  
<2° at rated current

**Frequency Range**  
50 Hz to 400 Hz

### MECHANICAL SPECIFICATIONS

**Dimensions**  
5.08 x 5.34 x 1.55 cm  
(2.0 x 2.1 x 0.6")

**Polarity**  
White lead is positive

**Output Lead**  
Leads 2.7 m (8 ft) twisted pair  
22 AWG

**Operating Temperature**  
Maximum 105°C (220°F)

DENT P/N	NOMINAL RATING (Amps)	USEFUL CURRENT RANGE (Amps)	DIMENSIONS				
			A	B	C	D	E
CT-SCS-0050	50	5 - 65	5.08 cm (2.0")	5.34 cm (2.1")	1.55 cm (0.6")	1.90 cm (0.75")	1.90 cm (0.75")
CT-SCS-0100	100	10 - 130	5.08 cm (2.0")	5.34 cm (2.1")	1.55 cm (0.6")	1.90 cm (0.75")	1.90 cm (0.75")

### OTHER FEATURES

**Window Size**  
1.90 cm (.75")

**Weight**  
136 g (4.8 oz)

**Dielectric Strength**  
5000V around the case  
600V rated leads

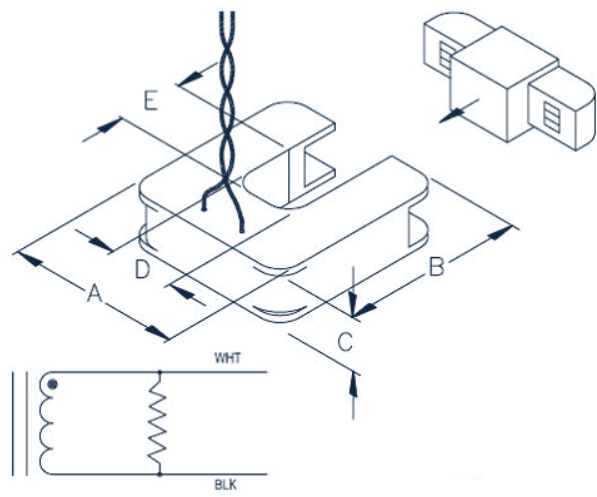
**Storage Temperature**  
Maximum 105°C (220°F)

**Case Protection**  
Epoxy encapsulated housing

### SAFETY SPECIFICATIONS

**ETL Listed**  
Compliant with IEEE C57.13-1993

**Working Voltage**  
Maximum 600 Vrms



### ORDERING PART NUMBER

AVAILABLE UNTERMINATED (U) OR WITH BANANA PLUGS (B)  
**CT-SCS-0050-U or -B**  
**CT-SCS-0100-U or -B**